

861900220



Heavy Duty incremental encoder

- ▶ Replaces 860900220
- ▶ Extremely robust housing for harsh environments
- ▶ 6 short-circuit protected outputs
1, $\bar{1}$, 2, $\bar{2}$, 0, $\bar{0}$
- ▶ IP 65, encapsulation class
- ▶ Electrically insulated hollow-shaft
- ▶ 9...30 Vdc



861900220

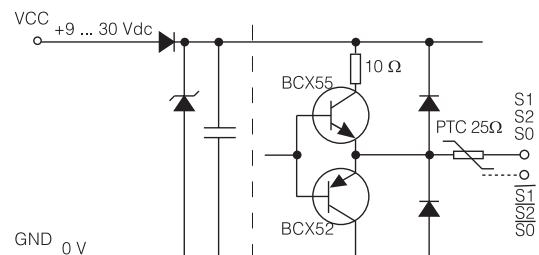
ELECTRICAL SPECIFICATION

Supply voltage +EV	9-30V
	Polarity protected
Current consumption at no load	60mA @ 24V Max 80mA
Line counts	1000, 1024, 2048, 4096ppr
Measuring steps	4 x Line counts
Accuracy	
Dividing error	$\pm 50^\circ$ el
Channel separation	$90^\circ \pm 25^\circ$ el
Outputs	High current HTL
	Short circuit protected
Load max	± 40 mA
Max cable length	350m @ 100kHz
U_{high} (at 40mA load)	$> +EV - 4,0V$
U_{low} (at 40mA load)	$< 2,5V$
Frequency range	0...100kHz

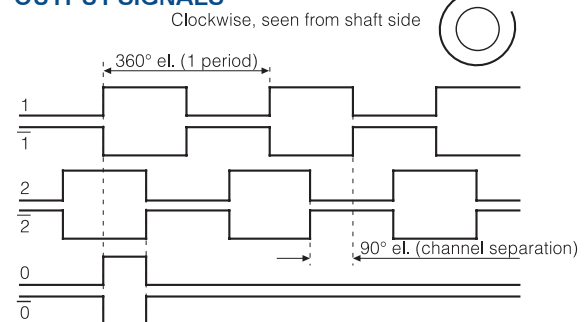
ACCESSORIES

Torque arm	
M6	Part. No. 01208014

OUTPUT CIRCUIT



OUTPUT SIGNALS

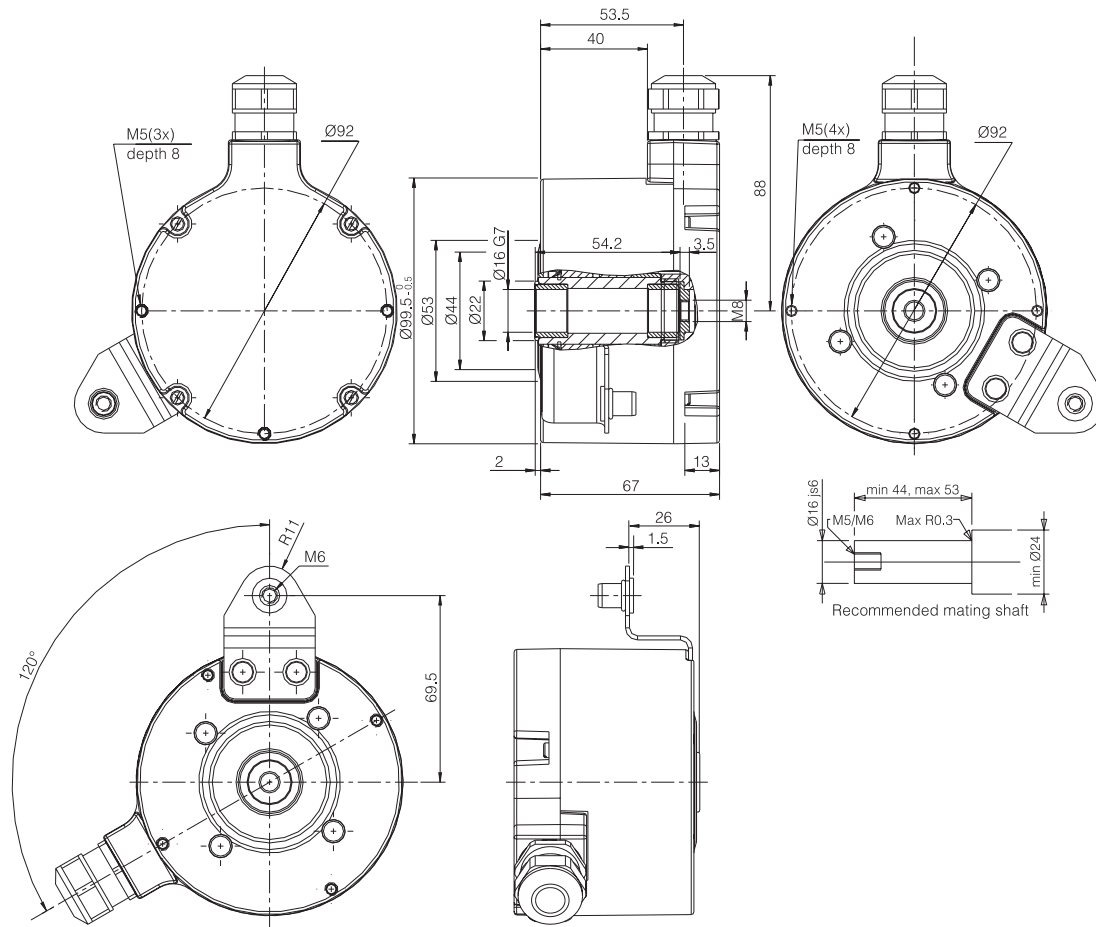


CONNECTION

Function	Terminal
+ E Volt	1
0 Volt	2
$\bar{0}$	3
$\bar{1}$	4
$\bar{2}$	5
$\bar{1}$	6
$\bar{2}$	7
$\bar{2}$	8



861900220



MECHANICAL SPECIFICATION

Isolated Hollow-shaft	Ø16mm, Stainless steel / PEEK
Moment of inertia	55 x 10 ⁻⁶ kgm ²
Load max	
Radial	300N
Axial	100N
Speed max	4000 rpm
Code disc	Glass disc
Temperature	
Operating	-20°C ... +80°C
Storage	-25°C ... +80°C (+105°C max 1h)
Housing	Aluminum, coated
Weight	Approx. 1300g
Protection class	IP 65 according to IEC 529
Vibration	<100m/s ² (50...2000 Hz)
Shock	<1000m/s ² (11ms)

ORDERING INFORMATION

8 6 1 - 9 0 0 2 2 0 -

Line counts

1000, 1024, 2048, 4096 ppr

Replaces model 860900220

Leine&Linde ISO 9001 certified

Leine&Linde AB, Box 8, SE-645 21 Strängnäs, Sweden. Olivehällsvägen 8.
 Phone: +46 (0)152 265 00. Fax: +46 (0)152 265 05. E-mail: info@leineline.se

01-09-27 PS. Specifications can be changed without prior notice.

www.leineline.se