

# 文件變更通知單

No. E117C0003

編 號	31057D98601		名 稱	AEHH8N PRODUCT NOTE		發 行		
<p>變更依據 ( 理由 ) :</p> <p>1.變更Detail Electrical Ratings DATA</p> <p>變更版數 :</p> <p>07版</p> <p>變更內容 :</p> <p>設變: 31057D98648 Rev.01</p>						份數	單 位	簽收
						1	研 設	原稿
						1	壓 品	電子
						1	HTEM	電子
						1	TM	電子
						1	外銷處	電子
						1	內銷處	電子
						1	供應鏈	電子
						1	FA電設課	電子
核 定	洪聯馨	複 審	徐聰豪	擬 案	李宗霖	發行日期	14-Jun-17	
	14-Jun-17		7-Jun-17			發行單位	研 設	





EFFECTIVE : 2-Feb-05

REVISED : 14-Jun-17

# PRODUCT NOTE

**MODEL : AEHH8N**  
**( NEMA Premium , Severe Duty )**

**HIGH EFFICIENCY MOTOR**  
**LOW VOLTAGE SQUIRREL CAGE**  
**FRAME SIZE : 143T ~ 449TS**



## TABLE OF CONTENTS

		DWG NO.	REV.	NAME	PAGES
		31057D98602	04	SPECIFICATION TABLE	2
		31057D62183	04	PERFORMANCE DATA	2
		31057D98648	01	Detail Electrical Ratings DATA	2
		31057D98603	04	OUTLINE DIMENSION SHEET ( F#143T~215T )	1
		31057D98604	05	OUTLINE DIMENSION SHEET ( F#254T~405TS )	1
HTEM	1	31057D98640	01	OUTLINE DIMENSION SHEET ( F#444~455T & TS )	1
TM	1	31057D98641	01	OUTLINE DIMENSION SHEET ( F#447~449T & TS )	1
外銷處	1	31057D98642	03	OUTLINE DIMENSION SHEET ( F#449T & TS )	1
內銷處	1	31057D98605	00	SCHEMATIC DRAWING ( F#143T~145T )	1
供應鏈	1	31057D98606	00	SCHEMATIC DRAWING ( F#182T~184T )	1
FA電設課	1	31057D98607	00	SCHEMATIC DRAWING ( F#213T~215T )	1
產品	1	31057D98608	00	SCHEMATIC DRAWING ( F#254T~284T and 286T )	1
設計	1	31057D98609	00	SCHEMATIC DRAWING ( F#284TS, 286TS and 324T~405TS )	1
		31057D98643	00	SCHEMATIC DRAWING ( F#444~449TS 2P )	1
		31057D98644	00	SCHEMATIC DRAWING ( F#444~449T 4P & UP )	1
		31057D98645	01	SCHEMATIC DRAWING ( F#449TS )	1
		31057D98646	01	SCHEMATIC DRAWING ( F#449T )	1
		APPD.	L.S.Hung	14-Jun-17	DWG NO. <b>31057D98601</b> REV. 07
		CHKD.	Tsunghao	7-Jun-17	
		DWN.	REX	6-Jun-17	
TECO Electric & Machinery Co., Ltd.					

ISSUED 2-Feb-05			<div>SPECIFICATION TABLE</div> <div>3-PHASE INDUCTION MOTOR LOW VOLTAGE SQUIRREL CAGE</div>			MODEL AEHH8N					
REVISED 2-Sep-16											
ITEM						STANDARD SPECIFICATION					
R A T I N G	Kind of Motor			Squirrel Cage Induction Motor ( SCIM )							
	Design Standards			NEMA MG-1, MG-13.							
	Voltage			230/460V , 460V, 575V.							
	Frequency			60Hz							
	Output Range			1HP ~ 400HP							
	R.P.M. (Syn.)			3600 ~ 900 R.P.M.( 2~8 Poles )							
	Time Duty			Continuous, S.F. 1.15 VFD : Continuous S.F. 1.0 For Class II, Division 2 F#143~449T & TS							
	Frame Size			143T ~ 449T & TS.							
	Protection Enclosure			F#143~405 : IP54 ,F#444~449 : IP55 .(Option IP66)							
	Cooling Method			Self External Fan, Surface Cooling ( IC 411 ).							
	Mounting			Horizontal Foot Mounting F-1 ( IM 1001 ), However, F-1, F-2 are Changeable.							
A P P L I C A T I O N	Power Condition			Voltage : ±10%, Frequency : ±5%, AND ±10% of Combined Voltage and Frequency, But Frequency Variation does not Exceed ±5%.							
	Environment Conditions			Place : Hazardous. Ambient Temperature : -15℃~40℃, Relative Humidity : Less Than 90%RH ( Non - Condensation ), Altitude : Less Than 3,300ft. Class I, Div.2, Group B, C & D, Temp. Code T3 min per CSA Certificate. (F#444~449 only except 2P-350HP, 4P-350HP and 6P-300HP) Class II, Div. 2, Group F & G per CSA Certificate. (STD:444T~449T except 2P-350HP, 4P-350HP and 6P-300HP; Option : 143T~405T)							
	Drive Method			143T~405T For Belt Drive Application, However ,for 2-Pole 25HP and Larger (Ts Frame) Direct-Coupling Service Only 444T~449T For Direct-Coupling Service							
	Direction of Rotation			Bi - Directional							
	Method of Starting			Full Voltage Direct On Line , For 7.5HP & Up Δ - △ Be Available.							
C O N S T R U C T I O N	Dimension			As F#31057D98603, 31057D98604, 31057D98640, 31057D98641 & 31057D98642.							
	Frame			High Grade Cast Iron with 2 Drain Holes at Bottom.							
	End Bracket ( Shield )			High Grade Cast Iron.							
	External Fan			Non-Sparking Plastic. Brozne for 2P (444TS ~ 449TS ).							
	Fan Cover ( Hood )			Cast Iron.							
	Shaft			Carbon Steel, Cylindrical Single Extension With Keyseat and Key.							
	Bearing			Bracket Mounting, Vacuum De - Gassed High Quality Open Bearings with Grease Relief Valve for Frame Size of 284TS, 286TS and 324T~449TS, Grease Pre - Packed Shielded Rolling Bearings, With Grease Relievable Unites for the Others.							
APPD.	Jim.Chang	21-Oct-16	TECO Electric & Machinery Co., Ltd.			DWG NO.					
CHKD.	Shian.Jeng	21-Oct-16				31057D98602					
DWN.	Nick_Hsu	2-Sep-16				REV. 04					
						1/2					

ISSUED 2-Feb-05			<div>SPECIFICATION TABLE</div> <div>3-PHASE INDUCTION MOTOR LOW VOLTAGE SQUIRREL CAGE</div>			MODEL AEHH8N		
REVISED 2-Sep-16								
ITEM				STANDARD SPECIFICATION				
C O N S T R U C T I O N	Lubricant			ZZ bearings for Mineral Oil, Li - Base Grease ( MULTEMP SRL ), Open bearings for Mobil Polyrex EM Grease.				
	Shaft Flinger			Metal Flinger on Both Ends for Frame Size of 284TS, 286TS and 324T~ 449TS, Rubber Flinger on Drive End Only for the Others.				
	Terminal Housing			Cast Iron, The Clearance Hole Cable Entrance in N.P.T. Threaded, Can be Set 90° Apart, with Clearance Hole Cable Entrance, F-1, F-2 Changeable.				
	Lead Terminal			Leads With Solderless Lug Terminals (a) 230/460V : Up To 5HP : 9 Leads. (b) 7.5-125HP : 12 Leads Suitable For Wye / Delta Starting. (c) 150HP And Above : 6 Leads Suitable For Wye/Delta Starting. (d) 575V : 3 Leads.				
	Iron Core			High Grade, Insulated, Cold - Rolled Electro - Magnetic Steel Plate.				
	Stator Winding			Pre - Formed, Random Wound, Made of Heavy, Heat - Resist Polyester Enameled Copper Wire.				
	Stator Insulation			Class F Insulation System.				
	Varnish Treatment			Phenolic Alkyd Resin Varnish.				
	Rotor Winding			Squirrel Cage, Aluminum Conductor With End - Ring and Wafer Blades Integrally Cast.				
	Painting			Phenolic Rust Proof Base Plus lacquer Surface Finished Painting in Light - Gray Color ( Munsell N5 ).				
	Name Plate			Stainless Steel Plate.				
	Bolt Thread			ISO Metric System,				
	Grounding Terminal			Be Set Inside The Terminal Housing.				
P E R F O R M A N C E	Test Procedure			IEEE-112 Method B and Full Voltage Measuring Starting Performance.				
	Typical Performance			As Dr# 31057D62183 .				
	Temperature Rise			Not to Exceed 90℃ (F#440T(~350HP) : 115℃) for S.F.1.15 or 80℃ for S.F.1.0 by Resistance Method, 400HP : Only 80℃ For SF.1.0 by Resistance Method.				
	Over Speed			125% Syn. R.P.M. for 2 Minutes. ( 2,4 Poles), 150% Syn. R.P.M. for 2 Minutes. ( the others).				
	Over Torque			160% Rated Torque for 15 Sec.				
	VFD Capability			Speed Range VT : 20 : 1, CT : 10 : 1 For Class I, Division 2 Speed Range VT : 20 : 1, CT : 5 : 1 For Class II, Division 2. F#143~449T & TS (Option)				
APPD.	Jim.Chang	21-Oct-16	TECO Electric & Machinery Co., Ltd.			DWG NO.		
CHKD.	Shian.Jeng	21-Oct-16				31057D98602		
DWN.	Nick_Hsu	2-Sep-16				REV. 04		
						2/2		

ISSUED 22-Oct-04			<div>PERFORMANCE DATA</div> <div>3-PHASE SQUIRREL CAGE</div> <div>HIGH EFFICIENCY INDUCTION MOTOR</div>											MODEL <div>AEHH8N</div>					
REVISED 14-Sep-15																			
<div>NEMA Premium</div>			<div>ee</div> CC002A																
<div>TEFC, NEMA T-FRAME, DESIGN - B,</div> <div>CLASS F, 40°C AMBIENT, CONTINUOUS DUTY,</div> <div>S.F. 1.15 460V 60Hz</div>																			
<div>TYPICAL PERFORMANCE</div> <div>( 460 V )</div>																			
HP	FULL LOAD RPM	FRAME SIZE	EFFICIENCY(%)				POWER FACTOR(%)			CURRENT			TORQUE				ROTOR WK <sup>2</sup> lb-ft <sup>2</sup>	NEMA CODE LETTER	APPROX. WEIGHT LBS
			FULL LOAD		3/4 LOAD	1/2 LOAD	FULL LOAD	3/4 LOAD	1/2 LOAD	FULL LOAD (A)	208V USABLE ON-A	LOCKED ROTOR (A)	FULL LOAD lb-ft	LOCKED ROTOR %FLT	PULL UP %FLT	BREAK DOWN %FLT			
			NOM.	MIN.	NOM.	NOM.													
1	3465	143T	82.5	80.0	81.5	78.5	85.0	79.5	68.5	1.34	2.95	15	1.515	350	365	400	0.046	N	48
	1745	143T	85.5	82.5	84.0	81.5	73.0	64.5	51.5	1.50	3.32	15	3.009	310	280	410	0.086	N	53
	1150	145T	82.5	80.0	82.5	80.0	65.5	57.0	44.5	1.73	3.83	15	4.566	250	220	300	0.122	N	59
	860	182T	77.0	74.0	75.5	70.0	58.5	49.5	38.0	2.08	4.60	15	6.105	200	150	270	0.239	N	95
1.5	3465	143T	84.0	81.5	84.0	81.5	83.5	77.0	65.0	2.00	4.43	20	2.273	340	280	350	0.052	M	50
	1730	145T	86.5	84.0	86.5	85.5	78.0	70.0	57.0	2.08	4.60	20	4.552	300	260	360	0.093	M	63
	1170	182T	87.5	85.5	85.5	82.5	63.5	55.0	42.5	2.53	5.59	20	6.731	210	190	350	0.313	M	88
	860	184T	78.5	75.5	76.0	71.0	60.5	51.5	39.5	2.96	6.54	15	9.158	200	150	270	0.275	M	99
2	3465	145T	86.5	84.0	86.5	85.5	86.0	80.5	70.0	2.52	5.57	25	3.031	350	315	390	0.064	L	59
	1740	145T	86.5	84.0	86.5	84.0	78.0	70.0	57.0	2.78	6.14	25	6.035	270	220	330	0.108	L	61
	1170	184T	88.5	86.5	88.5	86.5	70.5	63.0	50.5	3.00	6.64	25	8.975	180	150	270	0.423	L	99
	865	213T	85.5	82.5	84.0	81.0	68.0	58.0	45.0	3.22	7.12	25	12.14	200	190	290	0.586	L	147
3	3490	182T	88.5	86.5	90.2	89.5	90.0	87.0	79.5	3.53	7.80	32	4.513	280	250	380	0.190	K	95
	1755	182T	89.5	87.5	89.5	87.5	81.5	77.0	66.5	3.85	8.52	32	8.975	225	175	300	0.367	K	99
	1175	213T	89.5	87.5	89.5	87.5	78.0	70.5	58.5	4.02	8.90	32	13.41	210	180	340	0.918	K	147
	865	215T	85.5	82.5	85.5	83.0	66.0	56.0	45.0	4.98	11.0	32	18.21	240	210	300	0.821	K	198
5	3480	184T	88.5	86.5	89.5	89.5	92.5	91.0	85.5	5.72	12.6	46	7.544	290	230	320	0.272	J	105
	1745	184T	89.5	87.5	88.5	88.5	85.5	81.5	71.5	6.12	13.5	46	15.04	185	140	285	0.422	J	115
	1170	215T	91.0	89.5	91.0	89.5	82.5	77.0	65.5	6.24	13.8	46	22.44	190	160	300	1.224	J	198
	870	254T	87.5	85.5	87.5	86.5	72.0	64.0	51.0	7.43	16.4	46	30.18	190	180	250	1.660	J	266
7.5	3510	213T	91.0	89.5	91.0	90.2	89.0	87.0	80.0	8.67	19.2	64	11.22	200	175	275	0.448	H	167
	1755	213T	91.7	90.2	91.0	89.5	86.5	82.0	72.0	8.85	19.6	64	22.44	250	155	270	0.848	H	172
	1170	254T	91.0	89.5	91.0	89.5	80.5	75.0	64.0	9.59	21.2	64	33.66	240	215	270	2.158	H	266
	875	256T	87.5	85.5	87.5	85.5	74.0	66.0	53.0	10.8	24.0	64	45.00	220	190	280	2.872	H	301
10	3510	215T	91.0	89.5	91.7	91.0	89.5	88.5	82.5	11.5	25.4	81	14.96	220	180	260	0.573	H	196
	1755	215T	91.7	90.2	91.0	91.0	88.0	84.0	75.5	11.6	25.7	81	29.92	250	145	260	1.082	H	202
	1170	256T	91.0	89.5	91.7	90.2	80.5	75.0	64.0	12.8	28.3	81	44.88	225	185	250	2.872	H	301
	885	284T	90.2	88.5	90.2	89.5	73.5	66.0	53.5	14.1	31.2	81	59.33	235	210	280	5.421	H	407
15	3525	254T	92.4	91.0	92.4	91.7	91.5	90.5	86.0	16.6	36.7	116	22.34	210	180	270	1.088	G	266
	1765	254T	92.4	91.0	93.0	92.4	88.0	85.0	77.0	17.3	38.2	116	44.62	245	180	270	2.179	G	299
	1175	284T	92.4	91.0	93.0	93.0	83.5	79.5	70.5	18.2	40.3	116	67.03	215	180	230	6.823	G	407
	875	286T	90.2	88.5	90.2	90.2	78.0	73.0	62.0	20.0	44.1	116	90.01	200	170	230	7.961	G	464
20	3520	256T	92.4	91.0	93.0	93.6	92.5	91.5	88.0	21.9	48.5	145	29.83	210	180	260	1.407	G	328
	1760	256T	93.0	91.7	92.4	92.4	87.5	84.5	78.5	23.0	50.9	145	59.66	200	145	240	2.871	G	356
	1170	286T	91.7	90.2	92.4	92.4	84.0	81.0	73.0	24.3	53.8	145	89.75	210	160	225	8.340	G	464
	875	324T	91.0	89.5	91.7	91.7	81.0	77.0	68.0	25.4	56.2	145	120.0	200	150	210	10.39	G	627
25	3545	284TS	92.4	91.0	93.0	92.4	91.0	90.5	86.5	27.8	61.6	183	37.03	175	135	250	2.507	G	433
	1765	284T	93.6	92.4	93.6	93.6	86.0	83.0	77.0	29.1	64.3	183	74.37	205	165	240	4.586	G	469
	1170	324T	93.0	91.7	93.6	93.6	83.0	80.0	71.5	30.3	67.1	183	112.2	200	155	205	11.88	G	627
	875	326T	91.0	89.5	91.7	91.7	80.0	76.0	66.0	32.2	71.1	183	150.0	200	170	220	12.37	G	695
30	3545	286TS	93.0	91.7	93.6	93.0	91.0	90.5	87.5	33.2	73.4	218	44.43	175	140	240	2.831	G	444
	1770	286T	93.6	92.4	93.6	93.6	85.0	83.0	77.5	35.3	78.1	218	88.99	200	160	235	5.274	G	510
	1175	326T	93.0	91.7	93.6	93.6	80.5	78.5	71.0	37.5	83.0	218	134.1	210	180	230	12.37	G	695
	885	364T	93.0	91.7	93.0	92.4	78.0	73.0	61.0	38.7	85.6	218	178.0	210	170	240	17.94	G	871
40	3550	324TS	94.1	93.0	94.5	94.1	90.0	89.0	84.5	44.2	97.8	290	59.16	150	130	240	3.590	G	616
	1770	324T	94.1	93.0	94.5	94.5	86.0	84.5	78.5	46.3	102	290	118.7	205	170	220	8.624	G	638
	1180	364T	94.1	93.0	94.5	94.1	86.5	84.5	78.0	46.0	102	290	178.0	200	150	220	17.94	G	871
	885	365T	93.0	91.7	93.0	92.4	78.0	73.0	62.0	51.6	114	290	237.3	210	160	230	19.32	G	895
50	3550	326TS	94.1	93.0	94.5	94.5	91.0	90.0	86.5	54.7	121	363	73.95	150	130	240	4.488	G	713
	1770	326T	94.5	93.6	95.0	95.0	87.0	86.0	80.5	56.9	126	363	148.3	210	170	220	10.12	G	737
	1180	365T	94.1	93.0	94.5	93.6	86.0	83.0	75.5	57.8	128	363	222.5	225	170	240	21.39	G	895
	885	404T	93.0	91.7	93.6	93.6	81.0	77.0	68.0	62.1	137	363	296.6	210	175	230	31.47	G	1256
APPD.			Jim.Chang	17-Aug-15	TECO Electric & Machinery Co., Ltd.								DWG. NO.						
CHKD.			Lung	1-Jun-15									<div>31057D62183</div>						
DWN.			Lung	1-Jun-15									REV. 04						

1/2



ISSUED 2-Sep-16	<h1>Detail Electrical Ratings DATA</h1> <h2>3-PHASE SQUIRREL CAGE HIGH EFFICIENCY INDUCTION MOTORS</h2>	MODEL <b>AEHH8N</b>
REVISED		
6-Jun-17		

**Class I, Div. 2, Groups B, C and D; Temperature Coded T3, T3B, T3C**

**Class II, Div. 2, Groups F and G; Zone 22, Groups IIIA, and IIIB**

Types AEHH-XX horizontal mounting with or without C, D or P Flange,

Frames Sizes 143 to 449 max, 2, 4, 6 and 8 pole rated 600V max, 300 hp max;

Class F, TEFC; 60 Hz @ 1.15 S.F. or 50 Hz @ 1.0 S.F. ,Continuous or Inverter duty @ 1.0 S.F.

8N: Standard seals with standard paint; SY: Construction same as 8N but with keyless shaft extension

TYPE	POLES	HP	FRAME	SYN. SPEED	Variable Torque RPM (20:1)	Const. Torque RPM (10:1) or (5:1) or (3:1) or (2:1)	Const. HP RPM (max.)	TEMP. Code (Sine S.F. 1.15 / VFD 1.0)
AEHH	2	1	143T	3600	175 - 3600	355 - 3600	3600 - 7200	T3C / T3C
AEHH	2	1.5	143T	3600	175 - 3600	355 - 3600	3600 - 7200	T3C / T3C
AEHH	2	2	145T	3600	175 - 3600	355 - 3600	3600 - 7200	T3C / T3C
AEHH	2	3	182T	3600	175 - 3600	355 - 3600	3600 - 7200	T3C / T3C
AEHH	2	5	184T	3600	175 - 3600	355 - 3600	3600 - 7200	T3C / T3C
AEHH	2	7.5	213T	3600	175 - 3600	355 - 3600	3600 - 5400	T3C / T3B
AEHH	2	10	215T	3600	175 - 3600	355 - 3600	3600 - 5400	T3C / T3B
AEHH	2	15	254T	3600	175 - 3600	355 - 3600	3600 - 5400	T3C / T3B
AEHH	2	20	256T	3600	175 - 3600	355 - 3600	3600 - 5400	T3C / T3B
AEHH	2	25	284TS	3600	175 - 3600	355 - 3600	3600 - 5400	T3C / T3B
AEHH	2	30	286TS	3600	175 - 3600	355 - 3600	3600 - 5400	T3C / T3B
AEHH	2	40	324TS	3600	175 - 3600	355 - 3600	3600 - 4500	T3C / T3
AEHH	2	50	326TS	3600	175 - 3600	355 - 3600	3600 - 4500	T3C / T3
AEHH	2	60	364TS	3600	175 - 3600	355 - 3600	3600	T3C / T3
AEHH	2	75	365TS	3600	175 - 3600	355 - 3600	3600	T3C / T3
AEHH	2	100	405TS	3600	175 - 3600	355 - 3600	3600	T3C / T3
AEHH	2	125	444TS	3600	175 - 3600	720 - 3600	3600	T3C / T3
AEHH	2	150	445TS	3600	175 - 3600	720 - 3600	3600	T3 / T3
AEHH	2	200	447TS	3600	175 - 3600	720 - 3600	3600	T3 / T3
AEHH	2	250	449TS	3600	175 - 3600	1200 - 3600	3600	T3 / T3
AEHH	2	300	449TS	3600	175 - 3600	1200 - 3600	3600	T3 / T3
AEHH	2	350	449TS	3600	N/A	N/A	N/A	T3 / NA
AEHH	4	1	143T	1800	88 - 1800	178 - 1800	1800 - 3600	T3C / T3C
AEHH	4	1.5	145T	1800	88 - 1800	178 - 1800	1800 - 3600	T3C / T3C
AEHH	4	2	145T	1800	88 - 1800	178 - 1800	1800 - 3600	T3C / T3C
AEHH	4	3	182T	1800	88 - 1800	178 - 1800	1800 - 3600	T3C / T3C
AEHH	4	5	184T	1800	88 - 1800	178 - 1800	1800 - 3600	T3C / T3C
AEHH	4	7.5	213T	1800	88 - 1800	178 - 1800	1800 - 3600	T3C / T3B
AEHH	4	10	215T	1800	88 - 1800	178 - 1800	1800 - 3600	T3C / T3B
AEHH	4	15	254T	1800	88 - 1800	178 - 1800	1800 - 3600	T3C / T3B
AEHH	4	20	256T	1800	88 - 1800	178 - 1800	1800 - 3600	T3C / T3B
AEHH	4	25	284T	1800	88 - 1800	178 - 1800	1800 - 2700	T3C / T3B
AEHH	4	30	286T	1800	88 - 1800	178 - 1800	1800 - 2700	T3C / T3B
AEHH	4	40	324T	1800	88 - 1800	178 - 1800	1800 - 2700	T3C / T3B
AEHH	4	50	326T	1800	88 - 1800	178 - 1800	1800 - 2700	T3C / T3
AEHH	4	60	364T	1800	88 - 1800	178 - 1800	1800 - 2700	T3C / T3
AEHH	4	75	365T	1800	88 - 1800	178 - 1800	1800 - 2700	T3C / T3
AEHH	4	100	405T	1800	88 - 1800	178 - 1800	1800 - 2700	T3C / T3
AEHH	4	125	444T	1800	88 - 1800	360 - 1800	1800 - 2700	T3C / T3
AEHH	4	150	445T	1800	88 - 1800	360 - 1800	1800 - 2700	T3 / T3
AEHH	4	200	447T	1800	88 - 1800	360 - 1800	1800 - 2250	T3 / T3
AEHH	4	250	449T	1800	88 - 1800	600 - 1800	1800 - 2250	T3 / T3
AEHH	4	300	449T	1800	88 - 1800	600 - 1800	1800 - 2250	T3 / T3
AEHH	4	350	449T	1800	N/A	N/A	N/A	T3 / NA
AEHH	6	1	145T	1200	58 - 1200	118 - 1200	1200 - 2400	T3C / T3C
AEHH	6	1.5	182T	1200	58 - 1200	118 - 1200	1200 - 2400	T3C / T3C
AEHH	6	2	184T	1200	58 - 1200	118 - 1200	1200 - 2400	T3C / T3C
AEHH	6	3	213T	1200	58 - 1200	118 - 1200	1200 - 2400	T3C / T3C

- NOTE :
- (a) Suffix numbers and or letter representing mechanical construction.
  - (b) Current at 208V is also marked if the motor is rated with 208V on the nameplate in addition to other voltages.
  - (c) Motors may be provided with optional space heaters rated 115/230 VAC max having a total watt dissipation of 100 Watts max.
  - (d) Inverter Duty Ratings: VT: 20:1; CT: 10:1 or 3:1 (where applicable); CHP: See Table above
  - (e) Motors installed at higher altitude of 1000 m to 4000 m, they will be de-rated according to CSA Std. 100-14, Table 4, Note 5, as Follows: "For machines that operate under the prevailing barometric pressure and that are designed not to exceed the specified temperatures at altitudes from 1000 to 4000 m, the temperatures, as checked at altitudes below 1000 m, shall be less than those listed in this Table by 1% for each 100 m of altitude in excess of 1000 m"

APPD.	Tsunghao	7-Jun-17	TECO Electric & Machinery Co., Ltd.	DWG NO.	<b>31057D98648</b>
CHKD.	Tsunghao	7-Jun-17		Rev.01	
DWN.	REX	6-Jun-17		1/2	



ISSUED 2-Sep-16	<h1>Detail Electrical Ratings DATA</h1> <p>3-PHASE SQUIRREL CAGE HIGH EFFICIENCY INDUCTION MOTORS</p>	MODEL <b>AEHH8N</b>
REVISED 6-Jun-17		

Class I, Div. 2, Groups B, C and D; Temperature Coded T3, T3B, T3C

Class II, Div. 2, Groups F and G; Zone 22, Groups IIIA, and IIIB

Types AEHH-XX horizontal mounting with or without C, D or P Flange,  
Frames Sizes 143 to 449 max, 2, 4, 6 and 8 pole rated 600V max, 300 hp max;  
Class F, TEFC; 60 Hz @ 1.15 S.F. or 50 Hz @ 1.0 S.F. ,Continuous or Inverter duty @ 1.0 S.F.

8N: Standard seals with standard paint; SY: Construction same as 8N but with keyless shaft extension

TYPE	POLES	HP	FRAME	SYN. SPEED	Variable Torque RPM (20:1)	Const. Torque RPM (10:1) or (5:1) or (3:1) or (2:1)	Const. HP RPM (max.)	TEMP. Code (Sine S.F. 1.15 / VFD 1.0)
AEHH	6	5	215T	1200	58 - 1200	118 - 1200	1200 - 2400	T4 / T4
AEHH	6	7.5	254T	1200	58 - 1200	118 - 1200	1200 - 2400	T3C / T3B
AEHH	6	10	256T	1200	58 - 1200	118 - 1200	1200 - 2400	T3C / T3B
AEHH	6	15	284T	1200	58 - 1200	118 - 1200	1200 - 2400	T3C / T3B
AEHH	6	20	286T	1200	58 - 1200	118 - 1200	1200 - 2400	T3C / T3B
AEHH	6	25	324T	1200	58 - 1200	118 - 1200	1200 - 2400	T3C / T3B
AEHH	6	30	326T	1200	58 - 1200	118 - 1200	1200 - 2400	T3C / T3B
AEHH	6	40	364T	1200	58 - 1200	118 - 1200	1200 - 2400	T3C / T3B
AEHH	6	50	365T	1200	58 - 1200	118 - 1200	1200 - 2400	T3C / T3
AEHH	6	60	404T	1200	58 - 1200	118 - 1200	1200 - 2400	T3C / T3
AEHH	6	75	405T	1200	58 - 1200	118 - 1200	1200 - 2400	T3C / T3
AEHH	6	100	444T	1200	58 - 1200	118 - 1200	1200 - 1800	T3C / T3
AEHH	6	125	445T	1200	58 - 1200	240 - 1200	1200 - 1800	T3 / T3
AEHH	6	150	447T	1200	58 - 1200	240 - 1200	1200 - 1800	T3 / T3
AEHH	6	200	449T	1200	58 - 1200	400 - 1200	1200 - 1800	T3 / T3
AEHH	6	250	449T	1200	58 - 1200	400 - 1200	1200 - 1800	T3 / T3
AEHH	6	300	449T	1200	N/A	N/A	N/A N/A	T2C (1.0) / NA
AEHH	8	1	182T	900	43 - 900	88 - 900	900 - 1350	T3A / T3A
AEHH	8	1.5	184T	900	43 - 900	88 - 900	900 - 1350	T3A / T3A
AEHH	8	2	213T	900	43 - 900	88 - 900	900 - 1350	T3A / T3A
AEHH	8	3	215T	900	43 - 900	88 - 900	900 - 1350	T3A / T3A
AEHH	8	5	254T	900	43 - 900	88 - 900	900 - 1350	T3A / T3A
AEHH	8	7.5	256T	900	43 - 900	88 - 900	900 - 1350	T3A / T3A
AEHH	8	10	284T	900	43 - 900	88 - 900	900 - 1350	T3A / T3A
AEHH	8	15	286T	900	43 - 900	88 - 900	900 - 1350	T3A / T3A
AEHH	8	20	324T	900	43 - 900	88 - 900	900 - 1350	T3A / T3A
AEHH	8	25	326T	900	43 - 900	88 - 900	900 - 1350	T3A / T3A
AEHH	8	30	364T	900	43 - 900	88 - 900	900 - 1350	T3A / T3A
AEHH	8	40	365T	900	43 - 900	88 - 900	900 - 1350	T3A / T3A
AEHH	8	50	404T	900	43 - 900	88 - 900	900 - 1350	T3A / T3A
AEHH	8	60	405T	900	43 - 900	88 - 900	900 - 1350	T3A / T3A
AEHH	8	75	444T	900	43 - 900	300 - 900	900 - 1350	T3 / T3
AEHH	8	100	445T	900	43 - 900	300 - 900	900 - 1350	T3 / T3
AEHH	8	125	447T	900	43 - 900	300 - 900	900 - 1350	T3 / T3
AEHH	8	150	449T	900	43 - 900	450 - 900	900 - 1350	T3 / T3
AEHH	8	200	449T	900	43 - 900	450 - 900	900 - 1350	T3 / T3

CSA TEMPERATURE CODE	
Temperature code	Maximum external surface temperature, °C
T2A	280
T2B	260
T2C	230
T2D	215
T3	200
T3A	180
T3B	165
T3C	160
T4	135
T4A	120
T5	100
T6	85

APPD.	Tsunghao	7-Jun-17	TECO Electric & Machinery Co., Ltd.	DWG NO.
CHKD.	Tsunghao	7-Jun-17		<b>31057D98648</b>
DWN.	REX	6-Jun-17		Rev.01 2/2





ISSUED 2-Feb-05		OUTLINE DIMENSION SHEET 3-PHASE INDUCTION MOTOR FRAME SIZE 254T ~ 405TS										MODEL AEHH8N	
REVISED 2-Sep-16													

Totally Enclosed Fan - Cooled Type, Squirrel - Cage Rotor

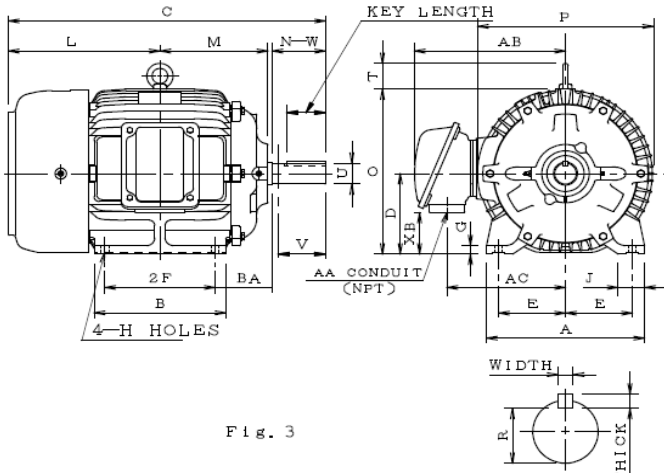


Fig. 3

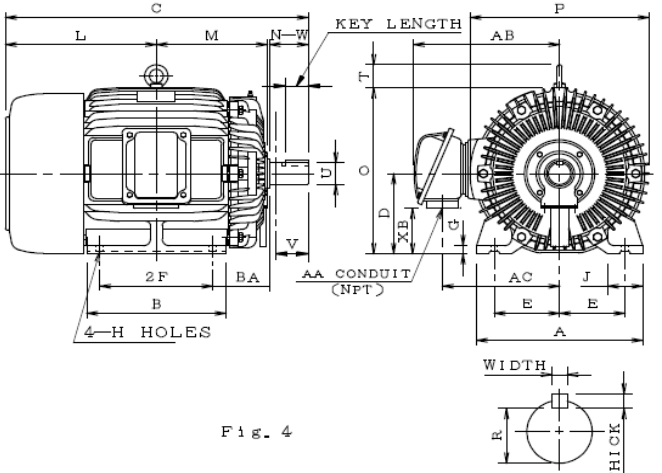


Fig. 4

Dimension in inches

Output (HP)				FRAME SIZE	FIG. NO.	Mounting				A	B	C	D	G	J	L	M	O
2P	4P	6P	8P			E	2F	H	BA									
15	15	7.5	5	254T	3	5.00	8.25	0.53	4.25	11.80	9.85	23.78	6.25	0.65	1.95	11.41	8.06	12.83
20	20	10	7.5	256T		5.00	10.00	0.53	4.25	11.80	11.80	25.52	6.25	0.65	1.95	12.27	8.94	12.83
—	25	15	10	284T		5.50	9.50	0.53	4.75	14.00	11.70	26.80	7.00	0.78	2.95	12.68	9.23	14.52
25	—	—	—	284TS	4	5.50	9.50	0.53	4.75	14.00	11.70	25.43	7.00	0.78	2.95	12.68	9.31	14.52
—	30	20	15	286T	3	5.50	11.00	0.53	4.75	14.00	13.20	28.30	7.00	0.78	2.95	13.43	9.98	14.52
30	—	—	—	286TS	4	5.50	11.00	0.53	4.75	14.00	13.20	26.93	7.00	0.78	2.95	13.43	10.06	14.52
—	40	25	20	324T		6.25	10.50	0.67	5.25	15.75	12.80	29.93	8.00	1.10	3.15	14.18	10.29	16.27
40	—	—	—	324TS		6.25	10.50	0.67	5.25	15.75	12.80	28.43	8.00	1.10	3.15	14.18	10.29	16.27
—	50	30	25	326T		6.25	12.00	0.67	5.25	15.75	14.35	31.42	8.00	1.10	3.15	14.92	11.04	16.27
50	—	—	—	326TS		6.25	12.00	0.67	5.25	15.75	14.35	29.92	8.00	1.10	3.15	14.92	11.04	16.27
—	60	40	30	364T		7.00	11.25	0.67	5.88	17.70	13.75	32.57	9.00	1.30	3.55	15.19	11.29	18.02
60	—	—	—	364TS		7.00	11.25	0.67	5.88	17.70	13.75	30.44	9.00	1.30	3.55	15.19	11.29	18.02
—	75	50	40	365T		7.00	12.25	0.67	5.88	17.70	14.75	33.55	9.00	1.30	3.55	15.67	11.79	18.02
75	—	—	—	365TS		7.00	12.25	0.67	5.88	17.70	14.75	31.42	9.00	1.30	3.55	15.67	11.79	18.02
—	—	60	50	404T		8.00	12.25	0.81	6.62	19.70	15.15	36.49	10.0	1.55	3.95	16.49	12.52	20.04
—	100	75	60	405T		8.00	13.75	0.81	6.62	19.70	16.75	37.99	10.0	1.55	3.95	17.24	13.27	20.04
100	—	—	—	405TS		8.00	13.75	0.81	6.62	19.70	16.75	34.99	10.0	1.55	3.95	17.24	13.27	20.04

FRAME SIZE	P	T	Key			Keyseat	Shaft Extension			Terminal Housing				Bearings	
			WIDTH	THICK	LENGTH	R	N-W	U	V	AA	AB	AC	XB	DRIVE END	OPPOSITE DRIVE END
254T	13.15	2.01	0.375	0.375	2.91	1.416	4.00	1.625	3.90	1 1/4	11.30	8.86	3.22	6309ZZ	6307ZZ
256T	13.15	2.01	0.375	0.375	2.91	1.416	4.00	1.625	3.90	1 1/4	11.30	8.86	3.22	6309ZZ	6307ZZ
284T	15.04	2.36	0.500	0.500	3.28	1.591	4.62	1.875	4.50	1 1/2	12.28	9.84	3.97	6311ZZ	6310ZZ
284TS	15.04	2.36	0.375	0.375	1.93	1.416	3.25	1.625	3.20	1 1/2	12.28	9.84	3.97	6211C3	6211C3
286T	15.04	2.36	0.500	0.500	3.28	1.591	4.62	1.875	4.50	1 1/2	12.28	9.84	3.97	6311ZZ	6310ZZ
286TS	15.04	2.36	0.375	0.375	1.93	1.416	3.25	1.625	3.20	1 1/2	12.28	9.84	3.97	6211C3	6211C3
324T	16.54	2.36	0.500	0.500	3.91	1.845	5.25	2.125	5.15	2	14.65	11.30	3.59	6312	6212
324TS	16.54	2.36	0.500	0.500	2.03	1.591	3.75	1.875	3.65	2	14.65	11.30	3.59	6312C3	6212C3
326T	16.54	2.36	0.500	0.500	3.91	2.201	5.25	2.125	5.15	2	14.65	11.30	3.59	6312	6212
326TS	16.54	2.36	0.500	0.500	2.03	1.591	3.75	1.875	3.65	2	14.65	11.30	3.59	6312C3	6212C3
364T	18.03	2.76	0.625	0.625	4.28	2.021	5.88	2.375	5.75	3	16.81	13.00	2.39	6313	6213
364TS	18.03	2.76	0.500	0.500	2.03	1.591	3.75	1.875	3.65	3	16.81	13.00	2.39	6312C3	6212C3
365T	18.03	2.76	0.625	0.625	4.28	2.021	5.88	2.375	5.75	3	16.81	13.00	2.39	6313	6213
365TS	18.03	2.76	0.500	0.500	2.03	1.591	3.75	1.875	3.65	3	16.81	13.00	2.39	6312C3	6212C3
404T	20.08	3.54	0.750	0.750	5.65	2.450	7.25	2.875	7.15	3	19.37	14.76	1.81	6317	6313
405T	20.08	3.54	0.750	0.750	5.65	2.450	7.25	2.875	7.15	3	19.37	14.76	1.81	6317	6313
405TS	20.08	3.54	0.500	0.500	2.78	1.845	4.25	2.125	4.15	3	19.37	14.76	1.81	6313C3	6313C3

Note :

1. Dimension D tolerance : +0.00 inch, -0.03 inches.

2. Dimension U tolerance : +0.000 inch, -0.001 inches.

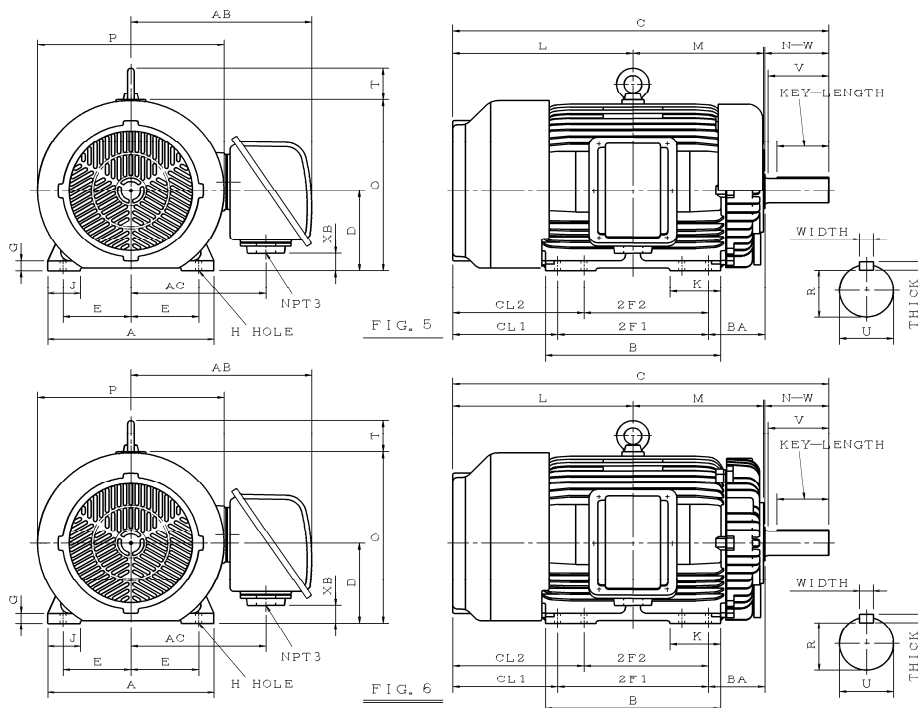
3. Dimension R tolerance : +0.000 inch, -0.015 inches.

4. Dimension V is length of straight part of shaft.

APPD.	Jim.Chang	21-Oct-16	TECO Electric & Machinery Co., Ltd.	DWG NO.
CHKD.	Shian.Jeng	21-Oct-16		31057D98604
DWN.	Nick_Hsu	2-Sep-16		REV. 05

ISSUED 7-Jun-13	<b>OUTLINE DIMENSION SHEET</b>  3-PHASE INDUCTION MOTOR FRAME SIZE 444 ~ 445T & TS	MODEL <b>AEHH8N</b>
REVISED 25-Sep-13		

**Totally Enclosed Fan - Cooled Type, Squirrel - Cage Rotor**



Dimension in inches

Output (HP)				FRAME SIZE	FIG. NO.	Mounting					A	B	C	CL1	CL2	D	G	J	K
2P	4P	6P	8P			E	2F1	2F2	H	BA									
—	125	100	75	444T	6	9.00	14.50	-	0.81	7.50	22.05	17.50	44.40	13.90	-	11.00	1.40	4.35	4.35
125	—	—	—	444TS	5	9.00	14.50	-	0.81	7.50	22.05	17.50	40.65	13.90	-	11.00	1.40	4.35	4.35
—	150	125	100	445T	6	9.00	16.50	14.50	0.81	7.50	22.05	17.50	46.40	13.90	15.90	11.00	1.40	4.35	5.10
150	—	—	—	445TS	5	9.00	16.50	14.50	0.81	7.50	22.05	17.50	42.65	13.90	15.90	11.00	1.40	4.35	5.10

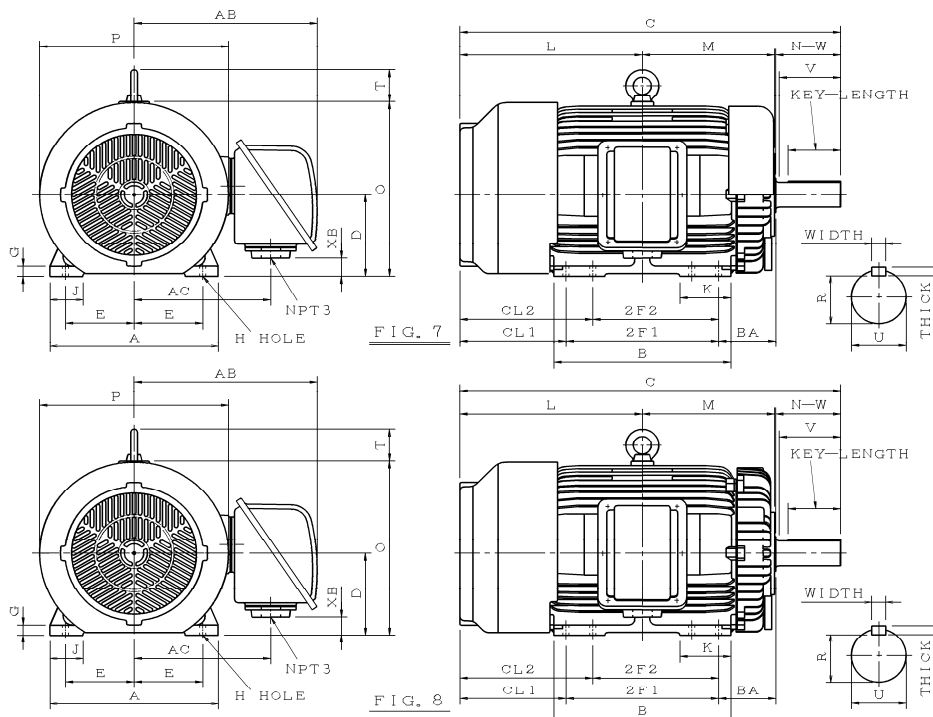
FRAME SIZE	L	M	O	P	T	Key			Keyseat R	Shaft Extension			Terminal Housing			Bearings	
						WIDTH	THICK	LENGTH		N-W	U	V	AB	AC	XB	DRIVE END	OPPOSITE DRIVE END
444T	21.15	14.40	23.55	24.75	4.35	0.875	0.875	6.91	2.880	8.50	3.375	8.00	24.00	17.90	2.40	6318	6316
444TS	21.15	14.40	23.55	24.75	4.35	0.625	0.625	3.03	2.021	4.75	2.375	4.50	24.00	17.90	2.40	6314C3	6314C3
445T	22.15	15.40	23.55	24.75	4.35	0.875	0.875	6.91	2.880	8.50	3.375	8.00	24.00	17.90	2.40	6318	6316
445TS	22.15	15.40	23.55	24.75	4.35	0.625	0.625	3.03	2.021	4.75	2.375	4.50	24.00	17.90	2.40	6314C3	6314C3

- Note :**
1. Dimension D tolerance : +0.00 inches, -0.06 inches.
  2. Dimension U tolerance : +0.000 inches, -0.001 inches.
  3. Dimension R tolerance : +0.000 inches, -0.015 inches.
  4. Dimension V is the length of straight part of shaft.
  5. For Direct Flexible Coupling.

APPD.	Tsunghao	25-Sep-13	<b>TECO Electric &amp; Machinery Co., Ltd.</b>	DWG NO.
CHKD.	K.L.Kuo	24-Sep-13		<b>31057D98640</b>
DWN.	AMO	10-Sep-13		REV. 01

ISSUED 7-Jun-13	<b>OUTLINE DIMENSION SHEET</b>  3-PHASE INDUCTION MOTOR FRAME SIZE 447 ~ 449T & TS	MODEL <b>AEHH8N</b>
REVISED 25-Sep-13		

**Totally Enclosed Fan - Cooled Type, Squirrel - Cage Rotor**



Dimension in inches

Output (HP)				FRAME SIZE	FIG. NO.	Mounting					A	B	C	CL1	CL2	D	G	J	K
2P	4P	6P	8P			E	2F1	2F2	H	BA									
—	200	150	125	447T	8	9.00	20.00	16.50	0.81	7.50	22.05	23.25	49.90	13.90	17.40	11.00	1.40	4.35	6.70
200	—	—	—	447TS	7	9.00	20.00	16.50	0.81	7.50	22.05	23.25	46.15	13.90	17.40	11.00	1.40	4.35	6.70
—	250 300	200 250 300	150 200	449T	8	9.00	25.00	20.00	0.81	7.50	22.05	27.95	54.90	13.90	18.90	11.00	1.40	4.35	8.25
250 300	—	—	—	449TS	7	9.00	25.00	20.00	0.81	7.50	22.05	27.95	51.15	13.90	18.90	11.00	1.40	4.35	8.25

FRAME SIZE	L	M	O	P	T	Key			Keyseat R	Shaft Extension			Terminal Housing			Bearings	
						WIDTH	THICK	LENGTH		N-W	U	V	AB	AC	XB	DRIVE END	OPPOSITE DRIVE END
447T	23.9	17.15	23.55	24.75	4.35	0.875	0.875	6.91	2.880	8.50	3.375	8.00	24.00	17.90	2.40	6320	6316
447TS	23.9	17.15	23.55	24.75	4.35	0.625	0.625	3.03	2.021	4.75	2.375	4.50	24.00	17.90	2.40	6314C3	6314C3
449T	26.4	19.65	23.55	24.75	4.35	0.875	0.875	6.91	2.880	8.50	3.375	8.00	24.00	17.90	2.40	6320	6316
449TS	26.4	19.65	23.55	24.75	4.35	0.625	0.625	3.03	2.021	4.75	2.375	4.50	24.00	17.90	2.40	6314C3	6314C3

- Note :**
1. Dimension D tolerance : +0.00 inches, -0.06 inches.
  2. Dimension U tolerance : +0.000 inches, -0.001 inches.
  3. Dimension R tolerance : +0.000 inches, -0.015 inches.
  4. Dimension V is the length of straight part of shaft.
  5. For Direct Flexible Coupling.

APPD.	Tsunghao	25-Sep-13	<b>TECO Electric &amp; Machinery Co., Ltd.</b>	DWG NO.
CHKD.	K.L.Kuo	24-Sep-13		<b>31057D98641</b>
DWN.	AMO	10-Sep-13		REV. 01

ISSUED	<h1>OUTLINE DIMENSION SHEET</h1> <p>3-PHASE INDUCTION MOTOR FRAME SIZE 449T &amp; TS</p>	MODEL
7-Jun-13		<b>AEHH8N</b>
REVISED		
2-Sep-16		

## Totally Enclosed Fan - Cooled Type, Squirrel - Cage Rotor

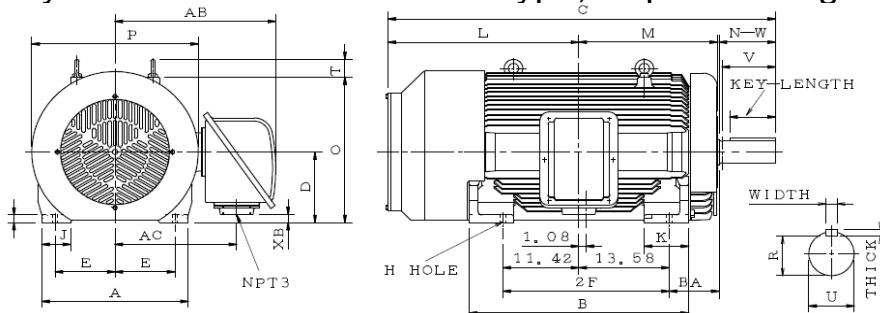


FIG. 9

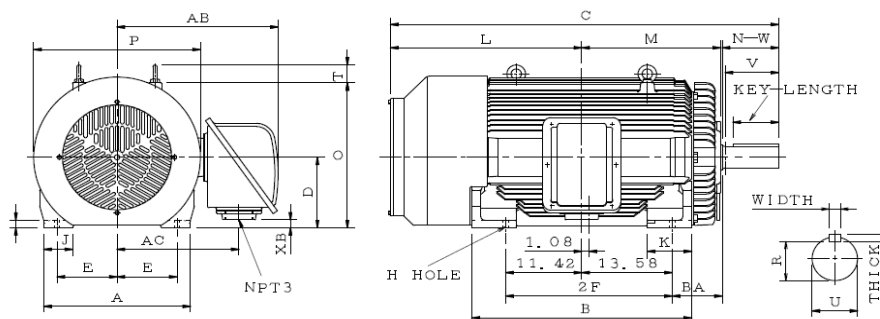


FIG. 10

Dimension in inches

Output (HP)				FRAME SIZE	FIG. NO.	Mounting				A	B	C	D	G	J	K	L	M
2P	4P	6P	8P			E	2F1	H	BA									
—	350 400	—	—	449T	10	9.00	25.00	0.81	7.50	22.05	33.05	58.63	11.00	1.20	4.35	6.70	29.05	20.67
350 400	—	—	—	449TS	9	9.00	25.00	0.81	7.50	22.05	33.05	54.88	11.00	1.20	4.35	6.70	29.05	20.47

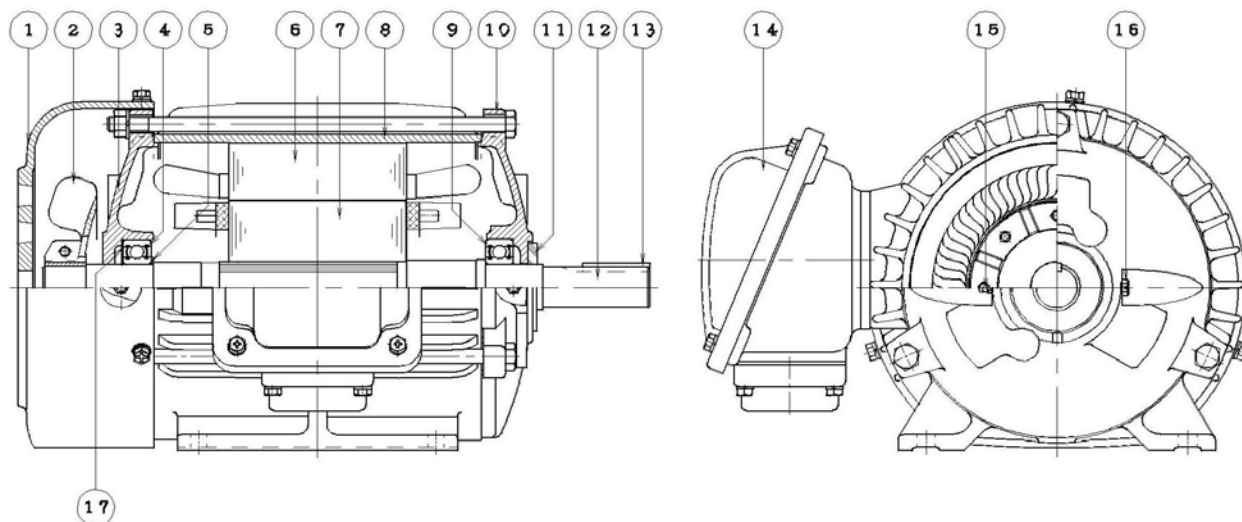
FRAME SIZE	O	P	T	Key			Keyseat R	Shaft Extension			Terminal Housing			Bearings	
				WIDTH	THICK	LENGTH		N-W	U	V	AB	AC	XB	DRIVE END	OPPOSITE DRIVE END
449T	22.6	25.45	4.3	0.875	0.875	6.89	2.880	8.50	3.375	8.00	25.15	19.05	1.25	6320	6316
449TS	22.6	25.45	4.3	0.625	0.625	3.03	2.021	4.75	2.375	4.50	25.15	19.05	1.25	6314C3	6314C3

- Note :**
1. Dimension D tolerance : +0.00 inches, -0.06 inches.
  2. Dimension U tolerance : +0.000 inches, -0.001 inches.
  3. Dimension R tolerance : +0.000 inches, -0.015 inches.
  4. Dimension V is the length of straight part of shaft.
  5. For Direct Flexible Coupling.

APPD.	Jim.Chang	21-Oct-16	TECO Electric & Machinery Co., Ltd.	DWG NO.
CHKD.	Shian.Jeng	21-Oct-16		<b>31057D98642</b>
DWN.	Nick_Hsu	2-Sep-16		REV. 03

ISSUED 2-Feb-05	<b>SCHEMATIC DRAWING</b>  3-PHASE INDUCTION MOTOR FRAME SIZE 143T ~ 145T	MODEL <b>AEHH8N</b>
REVISED		

Totally Enclosed Fan - Cooled Type, Squirrel - Cage Rotor

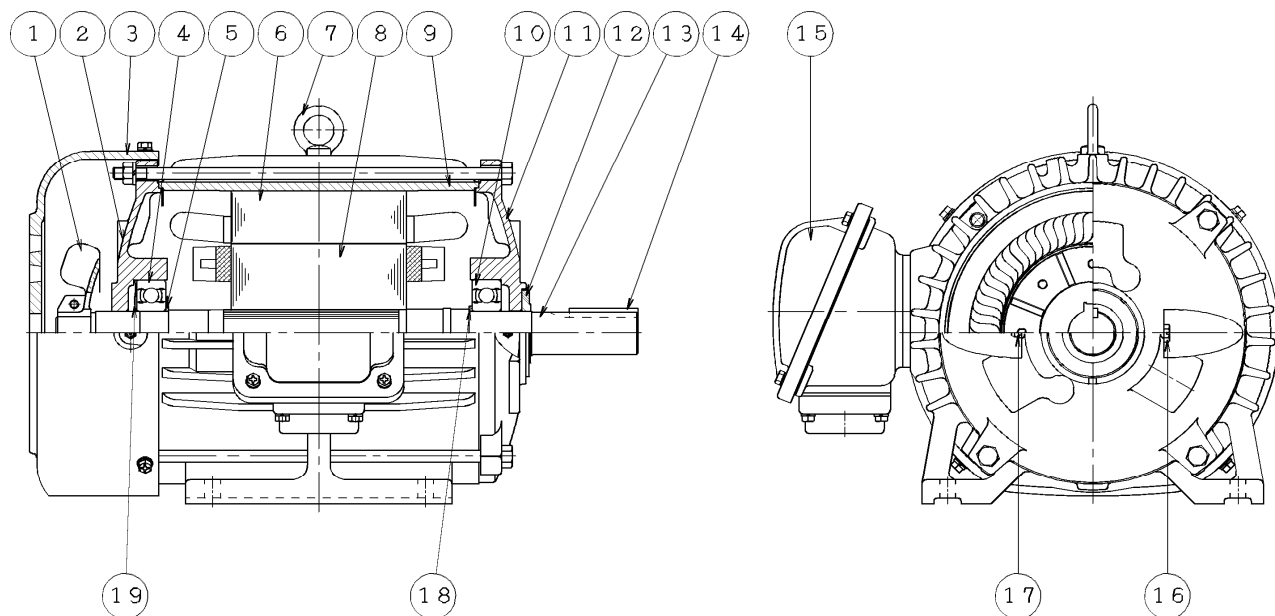


ITEM	NAME	ITEM	NAME
1	FAN COVER	10	END BRACKET
2	EXTERNAL FAN	11	DUST FLINGER
3	END BRACKET	12	SHAFT
4	BEARING	13	KEY
5	COLLAR ( STOP RING - BEARING )	14	TERMINAL HOUSING
6	STATOR	15	GREASE NIPPLE
7	ROTOR	16	GREASE DISCHARGE PLUG
8	FRAME	17	PRE - LOAD SPRING
9	BEARING		

APPD.	M.C.Tsai	28-Jan-05	<b>TECO Electric &amp; Machinery Co., Ltd.</b>	DWG NO.
CHKD.	Teng-Yun Wu	21-Jan-05		<b>31057D98605</b>
DWN.	Clive.Huang	19-Jan-05		REV. 00

ISSUED  2-Feb-05	<b>SCHEMATIC DRAWING</b>  3-PHASE INDUCTION MOTOR FRAME SIZE 182T ~ 184T	MODEL  <b>AEHH8N</b>
REVISED		

Totally Enclosed Fan - Cooled Type, Squirrel - Cage Rotor



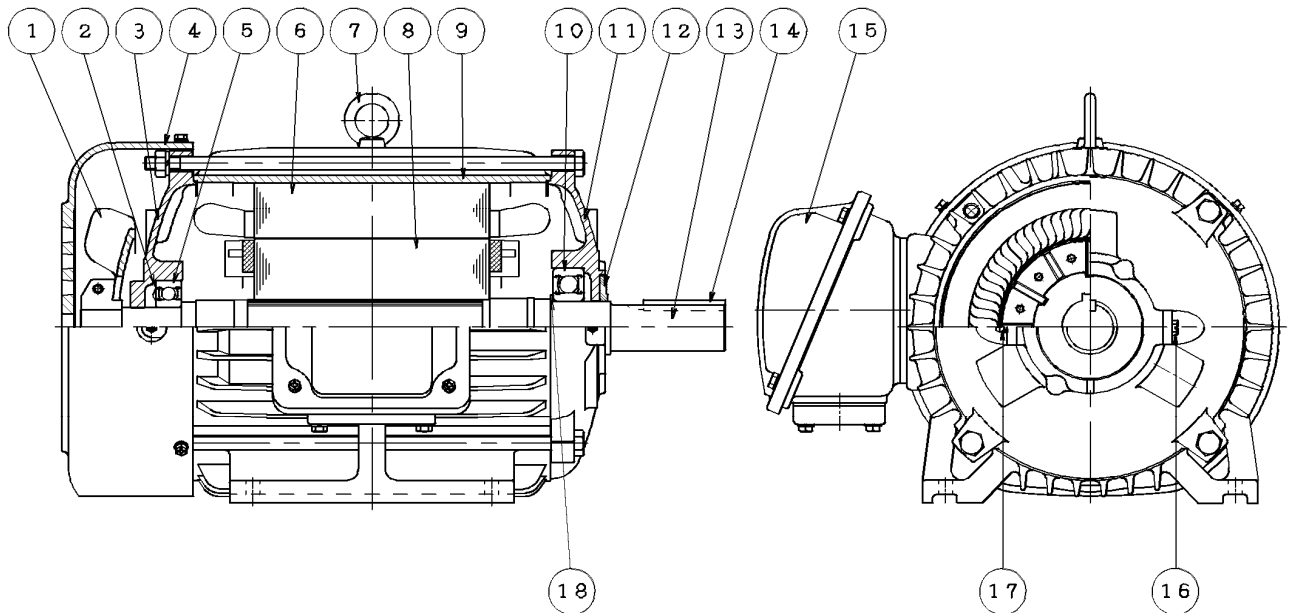
ITEM	NAME	ITEM	NAME
1	EXTERNAL FAN	11	END BRACKET
2	END BRACKET	12	DUST FLINGER
3	FAN COVER	13	SHAFT
4	BEARING	14	KEY
5	COLLAR ( STOP RING - BEARING )	15	TERMINAL HOUSING
6	STATOR	16	GREASE DISCHARGE PLUG
7	LIFTING EYE ( EYE BOLT )	17	GREASE NIPPLE
8	ROTOR	18	COLLAR ( STOP RING - BEARING )
9	FRAME	19	PRE - LOAD SPRING
10	BEARING		

APPD.	M.C.Tsai	28-Jan-05	<b>TECO Electric &amp; Machinery Co., Ltd.</b>	DWG NO.
CHKD.	Teng-Yun Wu	21-Jan-05		<b>31057D98606</b>
DWN.	Clive.Huang	19-Jan-05		REV. 00



ISSUED  2-Feb-05	<b>SCHEMATIC DRAWING</b>  3-PHASE INDUCTION MOTOR FRAME SIZE 213T ~ 215T	MODEL  <b>AEHH8N</b>
REVISED		

Totally Enclosed Fan - Cooled Type, Squirrel - Cage Rotor

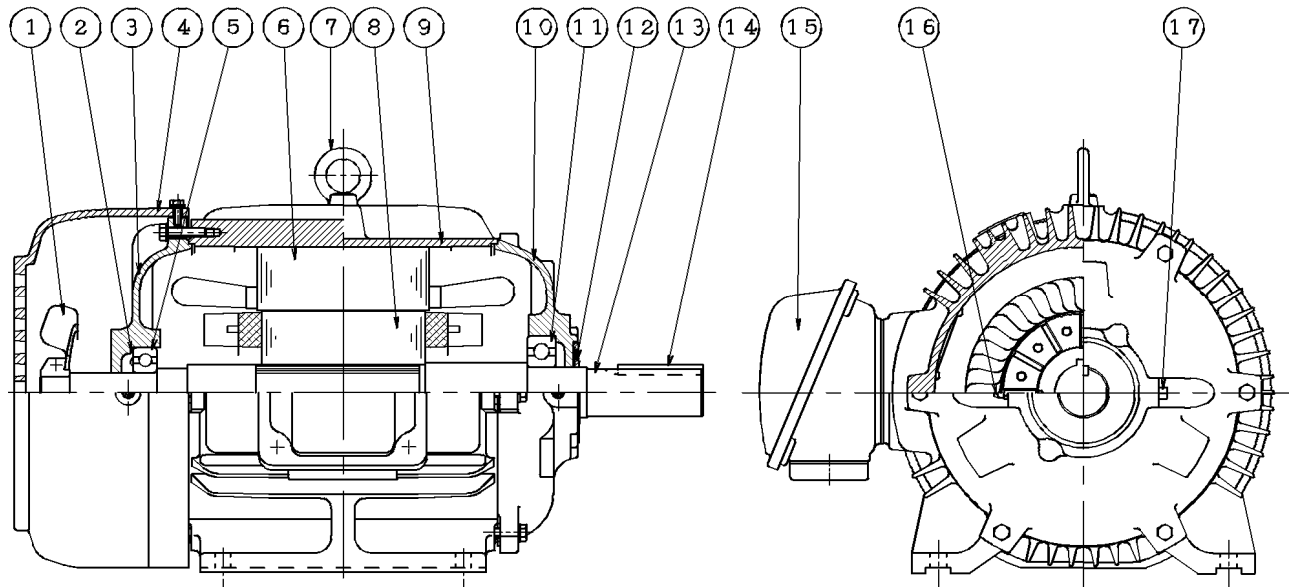


ITEM	NAME	ITEM	NAME
1	EXTERNAL FAN	10	BEARING
2	PRE - LOAD SPRING	11	END BRACKET
3	END BRACKET	12	DUST FLINGER
4	FAN COVER	13	SHAFT
5	BEARING	14	KEY
6	STATOR	15	TERMINAL HOUSING
7	LIFTING EYE ( EYE BOLT )	16	GREASE DISCHARGE PLUG
8	ROTOR	17	GREASE NIPPLE
9	FRAME	18	COLLAR ( STOP RING - BEARING )

APPD.	M.C.Tsai	28-Jan-05	<b>TECO Electric &amp; Machinery Co., Ltd.</b>	DWG NO.
CHKD.	Teng-Yun Wu	21-Jan-05		<b>31057D98607</b>
DWN.	Clive.Huang	19-Jan-05		REV. 00

ISSUED 2-Feb-05	<b>SCHEMATIC DRAWING</b>  3-PHASE INDUCTION MOTOR FRAME SIZE F# 254T ~ 284T and 286T	MODEL <b>AEHH8N</b>
REVISED		

Totally Enclosed Fan - Cooled Type, Squirrel - Cage Rotor

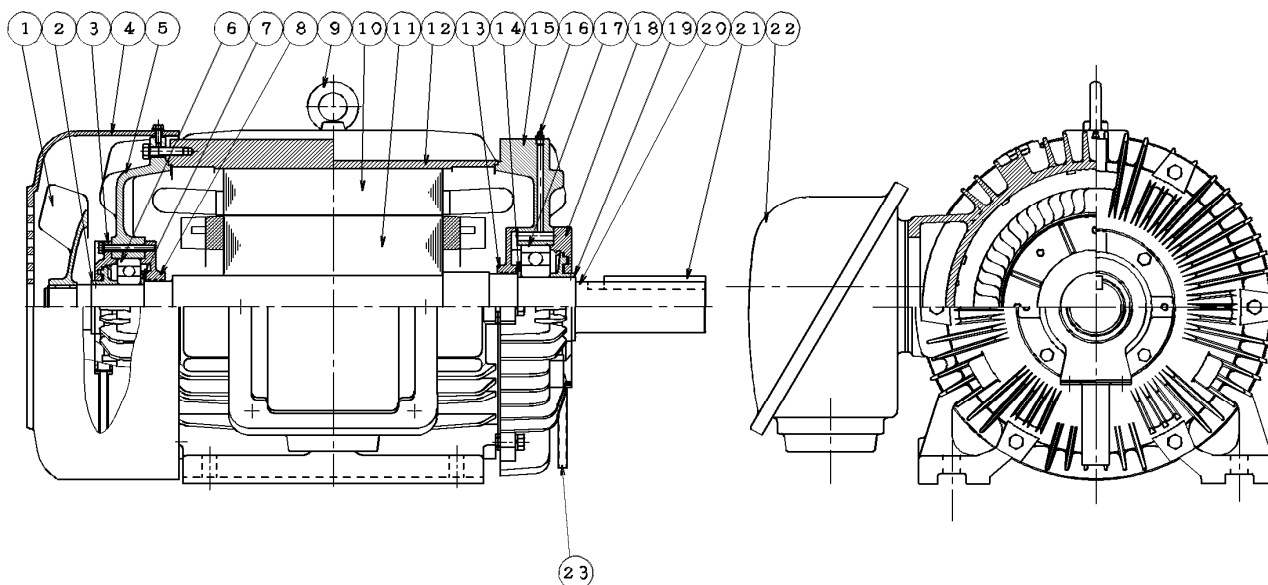


ITEM	NAME	ITEM	NAME
1	EXTERNAL FAN	10	END BRACKET
2	PRE - LOAD SPRING	11	BEARING
3	END BRACKET	12	DUST FLINGER
4	FAN COVER	13	SHAFT
5	BEARING	14	KEY
6	STATOR	15	TERMINAL HOUSING
7	LIFTING EYE ( EYE BOLT )	16	GREASE NIPPLE
8	ROTOR	17	GREASE DISCHARGE PLUG
9	FRAME		

APPD.	M.C.Tsai	28-Jan-05	<b>TECO Electric &amp; Machinery Co., Ltd.</b>	DWG NO.
CHKD.	Teng-Yun Wu	21-Jan-05		<b>31057D98608</b>
DWN.	Clive.Huang	19-Jan-05		REV. 00

ISSUED  2-Feb-05	<b>SCHEMATIC DRAWING</b>  3-PHASE INDUCTION MOTOR FRAME SIZE 284TS, 286TS and 324T ~ 405TS	MODEL <b>AEHH8N</b>
REVISED		

Totally Enclosed Fan - Cooled Type, Squirrel - Cage Rotor

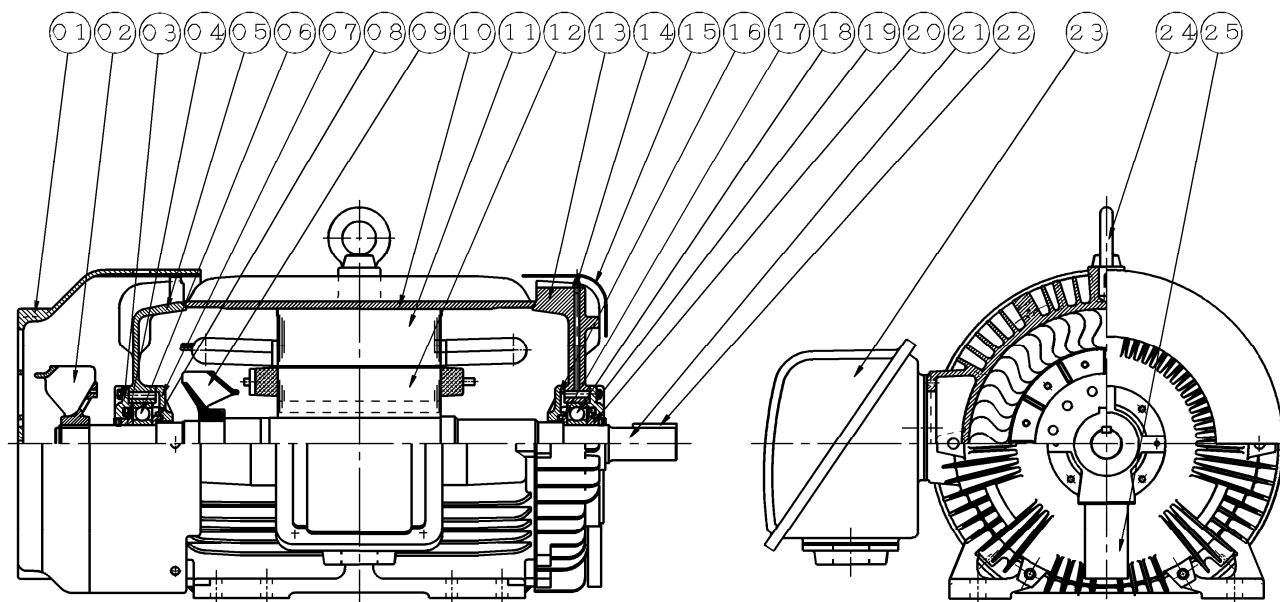


ITEM	NAME	ITEM	NAME
1	EXTERNAL FAN	13	BEARING CAP
2	GREASE FLINGER	14	( BEARING COVER - INNER )
3	BEARING CAP ( BEARING COVER - OUTER )		COLLAR ( STOP RING - BEARING )
4	FAN COVER	15	END BRACKET
5	END BRACKET	16	GREASE NIPPLE
6	BEARING	17	BEARING
7	COLLAR ( STOP RING - BEARING )	18	BEARING CAP
8	BEARING CAP ( BEARING COVER - INNER )		( BEARING COVER - OUTER )
9	LIFTING EYE ( EYE BOLT )	19	GREASE FLINGER
10	STATOR	20	SHAFT
11	ROTOR	21	KEY
12	FRAME	22	TERMINAL HOUSING
		23	GREASE DISCHARGE

APPD.	M.C.Tsai	28-Jan-05	<b>TECO Electric &amp; Machinery Co., Ltd.</b>	DWG NO.
CHKD.	Teng-Yun Wu	21-Jan-05		<b>31057D98609</b>
DWN.	Clive.Huang	19-Jan-05		REV. 00

ISSUED  7-Jun-13	<b>SCHEMATIC DRAWING</b>  3-PHASE INDUCTION MOTOR FRAME SIZE 444 ~ 449TS ( 2P )	MODEL  <b>AEHH8N</b>
REVISED		

Totally Enclosed Fan - Cooled Type, Squirrel - Cage Rotor

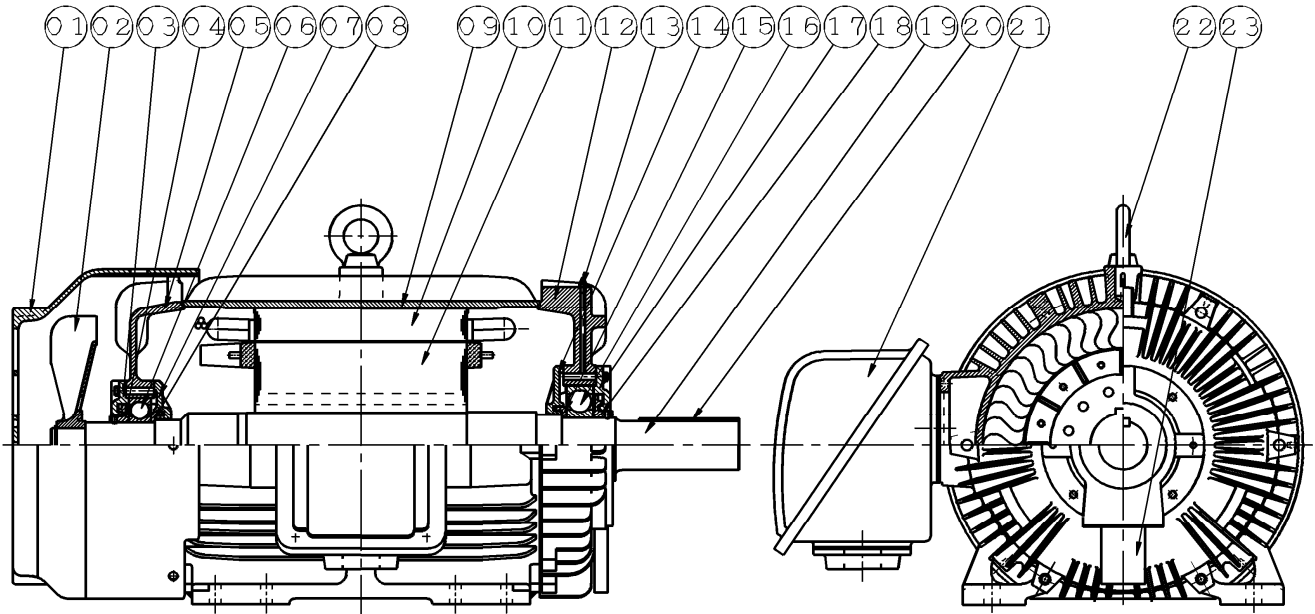


ITEM	NAME	ITEM	NAME
1	FAN COVER	14	GREASE NIPPLE
2	EXTERNAL FAN	15	FAN COVER
3	BEARING COVER - OUTER	16	BEARING COVER - INNER
4	GREASE FLINGER	17	STOP RING - BEARING
5	END BRACKET	18	BEARING
6	BEARING	19	BEARING COVER - OUTER
7	BEARING COVER - INNER	20	GREASE FLINGER
8	STOP RING - BEARING	21	SHAFT
9	INNER FAN	22	KEY
10	FRAME	23	TERMINAL BOX
11	STATOR	24	EYE BOLT
12	ROTOR	25	OIL DRAIN COVER
13	END BRACKET		

APPD.	Tsunghao	7-Jun-13	TECO Electric & Machinery Co., Ltd.	DWG NO.
CHKD.	K.L.Kuo	15-May-13		<b>31057D98643</b>
DWN.	AMO	25-Apr-13		REV. 00

ISSUED 7-Jun-13	<b>SCHEMATIC DRAWING</b>  3-PHASE INDUCTION MOTOR FRAME SIZE 444 ~ 449T ( 4P & UP )	MODEL <b>AEHH8N</b>
REVISED		

Totally Enclosed Fan - Cooled Type, Squirrel - Cage Rotor

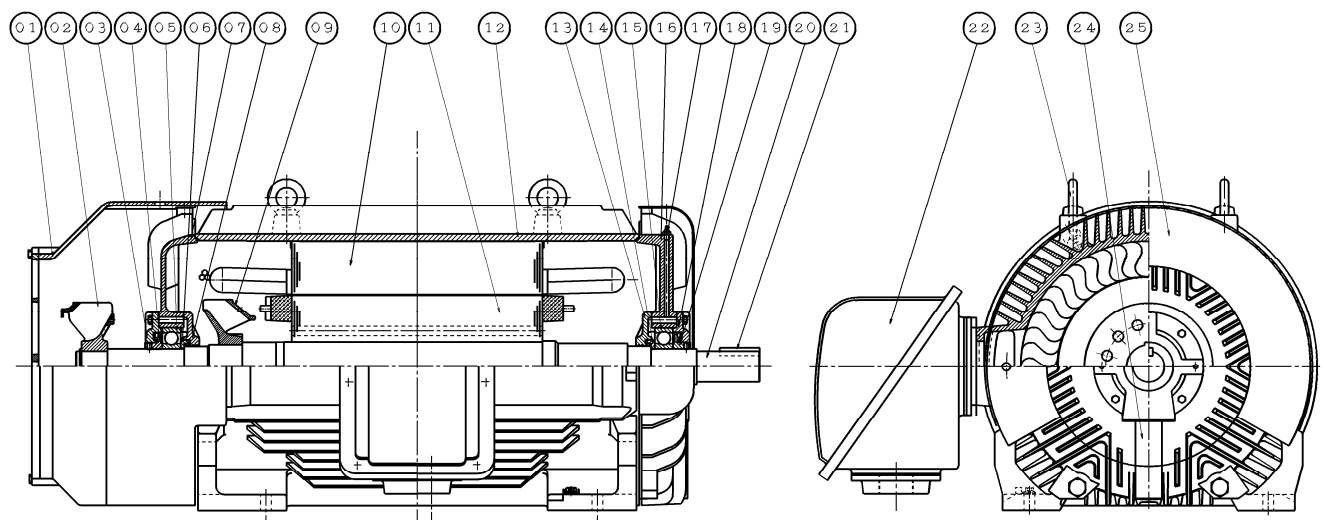


ITEM	NAME	ITEM	NAME
1	FAN COVER	13	GREASE NIPPLE
2	EXTERNAL FAN	14	BEARING COVER - INNER
3	BEARING COVER - OUTER	15	STOP RING - BEARING
4	GREASE FLINGER	16	BEARING
5	END BRACKET	17	BEARING COVER - OUTER
6	BEARING	18	GREASE FLINGER
7	BEARING COVER - INNER	19	SHAFT
8	STOP RING - BEARING	20	KEY
9	FRAME	21	TERMINAL BOX
10	STATOR	22	EYE BOLT
11	ROTOR	23	OIL DRAIN COVER
12	END BRACKET		

APPD.	Tsunghao	7-Jun-13	TECO Electric & Machinery Co., Ltd.	DWG NO.
CHKD.	K.L.Kuo	15-May-13		<b>31057D98644</b>
DWN.	AMO	25-Apr-13		REV. 00

ISSUED 7-Jun-13	<b>SCHEMATIC DRAWING</b>  3-PHASE INDUCTION MOTOR FRAME SIZE 449 TS ( 2P )	MODEL <b>AEHH8N</b>
REVISED 2-Sep-16		

Totally Enclosed Fan - Cooled Type, Squirrel - Cage Rotor

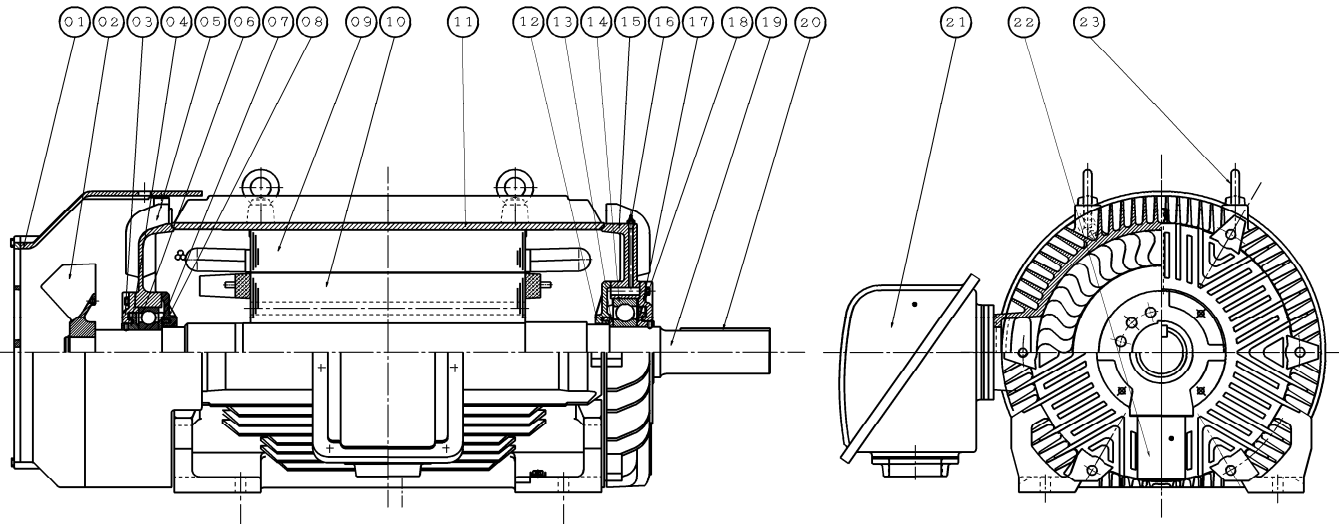


ITEM	NAME	ITEM	NAME
1	FAN COVER	14	STOP RING - BEARING
2	EXTERNAL FAN	15	BEARING
3	BEARING CAP (BEARING COVER - OUTER)	16	END BRACKET
4	GREASE FLINGER	17	GREASE NIPPLE
5	BEARING	18	BEARING CAP (BEARING COVER - OUTER)
6	STOP RING - BEARING	19	GREASE FLINGER
7	END BRACKET	20	SHAFT
8	BEARING CAP (BEARING COVER - INNER)	21	SHAFT END KEY
9	INNER FAN	22	PRIMARY T-BOX
10	STATOR	23	LIFTING EYE(EYE BOLT)
11	ROTOR	24	OIL DRAIN COVER
12	FRAME	25	FAN COVER
13	BEARING CAP (BEARING COVER - INNER)		

APPD.	Jim.Chang	21-Oct-16	<b>TECO Electric &amp; Machinery Co., Ltd.</b>	DWG NO.
CHKD.	Shian.Jeng	21-Oct-16		<b>31057D98645</b>
DWN.	Nick_Hsu	2-Sep-16		REV. 01

ISSUED 7-Jun-13	<b>SCHEMATIC DRAWING</b>  3-PHASE INDUCTION MOTOR FRAME SIZE 449T ( 4P )	MODEL <b>AEHH8N</b>
REVISED 2-Sep-16		

Totally Enclosed Fan - Cooled Type, Squirrel - Cage Rotor



ITEM	NAME	ITEM	NAME
1	FAN COVER	13	STOP RING - BEARING
2	EXTERNAL FAN	14	BEARING
3	BEARING CAP (BEARING COVER - OUTER)	15	END BRACKET
4	GREASE FLINGER	16	GREASE NIPPLE
5	END BRACKET	17	BEARING CAP (BEARING COVER - OUTER)
6	BEARING	18	GREASE FLINGER
7	STOP RING - BEARING	19	SHAFT
8	BEARING CAP (BEARING COVER - INNER)	20	SHAFT END KEY
9	STATOR	21	PRIMARY T-BOX
10	ROTOR	22	OIL DRAIN COVER
11	FRAME	23	LIFTING EYE ( EYE BOLT )
12	BEARING CAP (BEARING COVER - INNER)		

APPD.	Jim.Chang	21-Oct-16	<b>TECO Electric &amp; Machinery Co., Ltd.</b>	DWG NO.
CHKD.	Shian.Jeng	21-Oct-16		<b>31057D98646</b>
DWN.	Nick_Hsu	2-Sep-16		REV. 01